



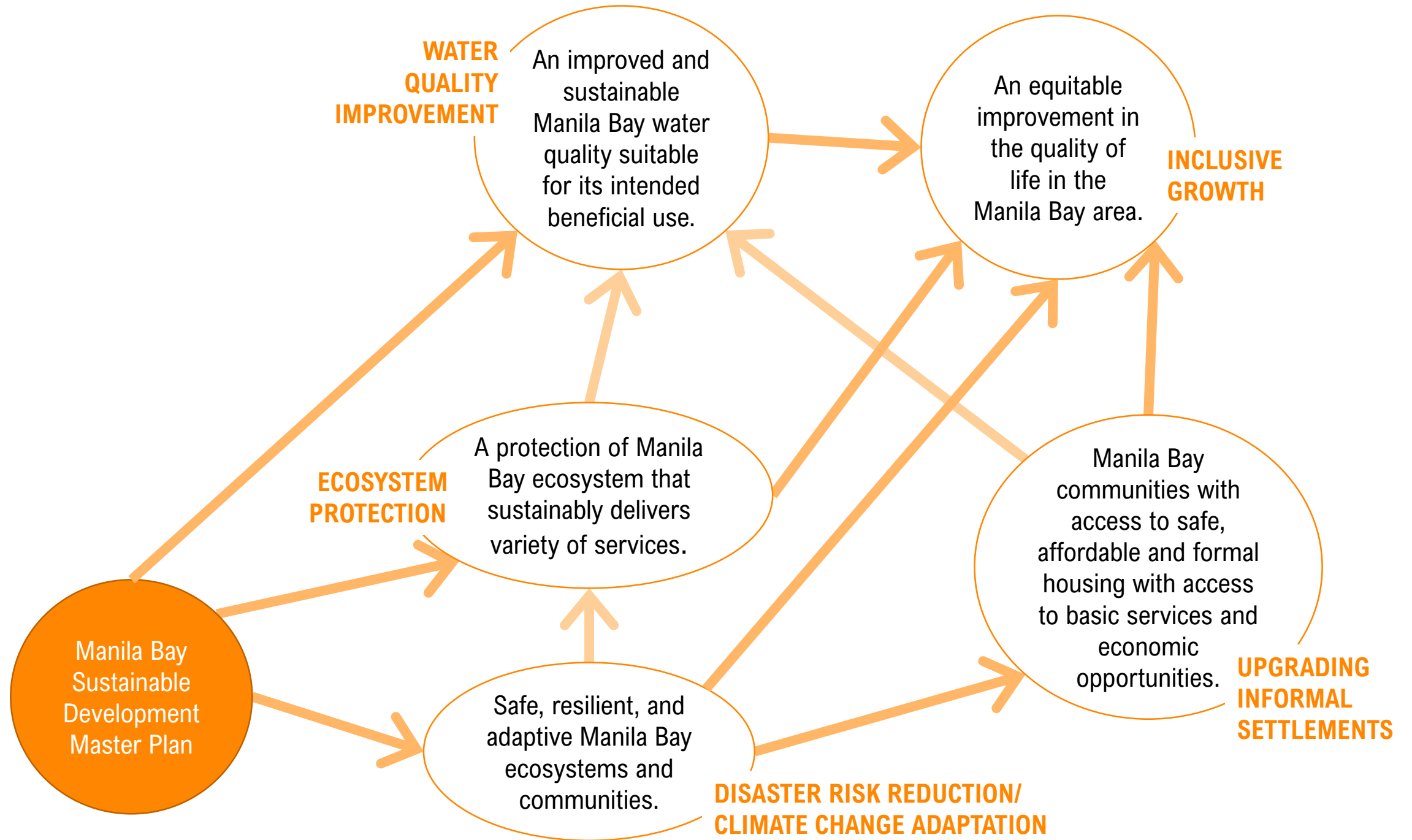
## Manila Bay Sustainable Development Master Plan

# Manila Bay Addressing Concerns of Informal Settlements in High Risk Areas

Technical Committee Meeting

January 16, 2020

whatdowewant?



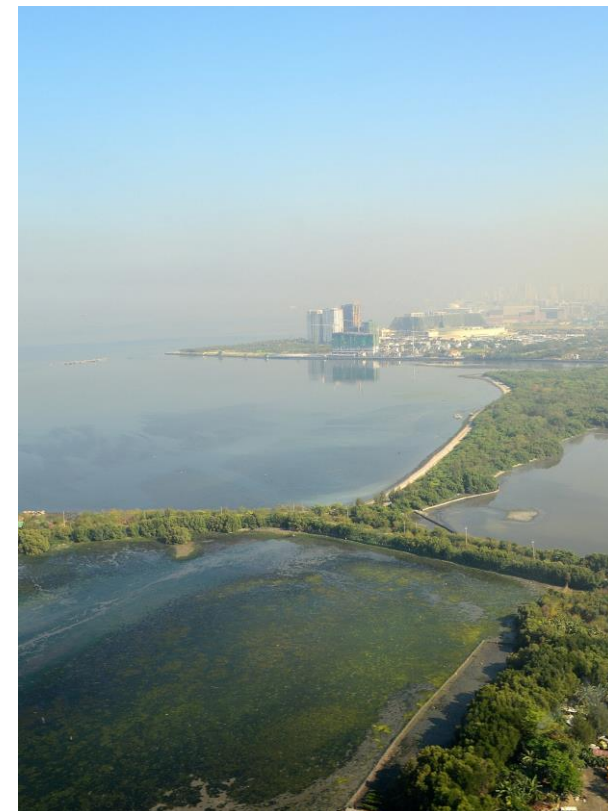
# A Sustainable and Resilient Manila Bay

*through*

- improving water quality of Manila Bay,
- protecting the Manila Bay ecosystem, and
- making the Manila Bay ecosystem and communities safe, resilient and adaptive

*while*

- promoting inclusive growth, and
- ensuring informal settlements in cleared hazard-prone areas are with access to safe, affordable, formal housing and to basic services and economic opportunities.



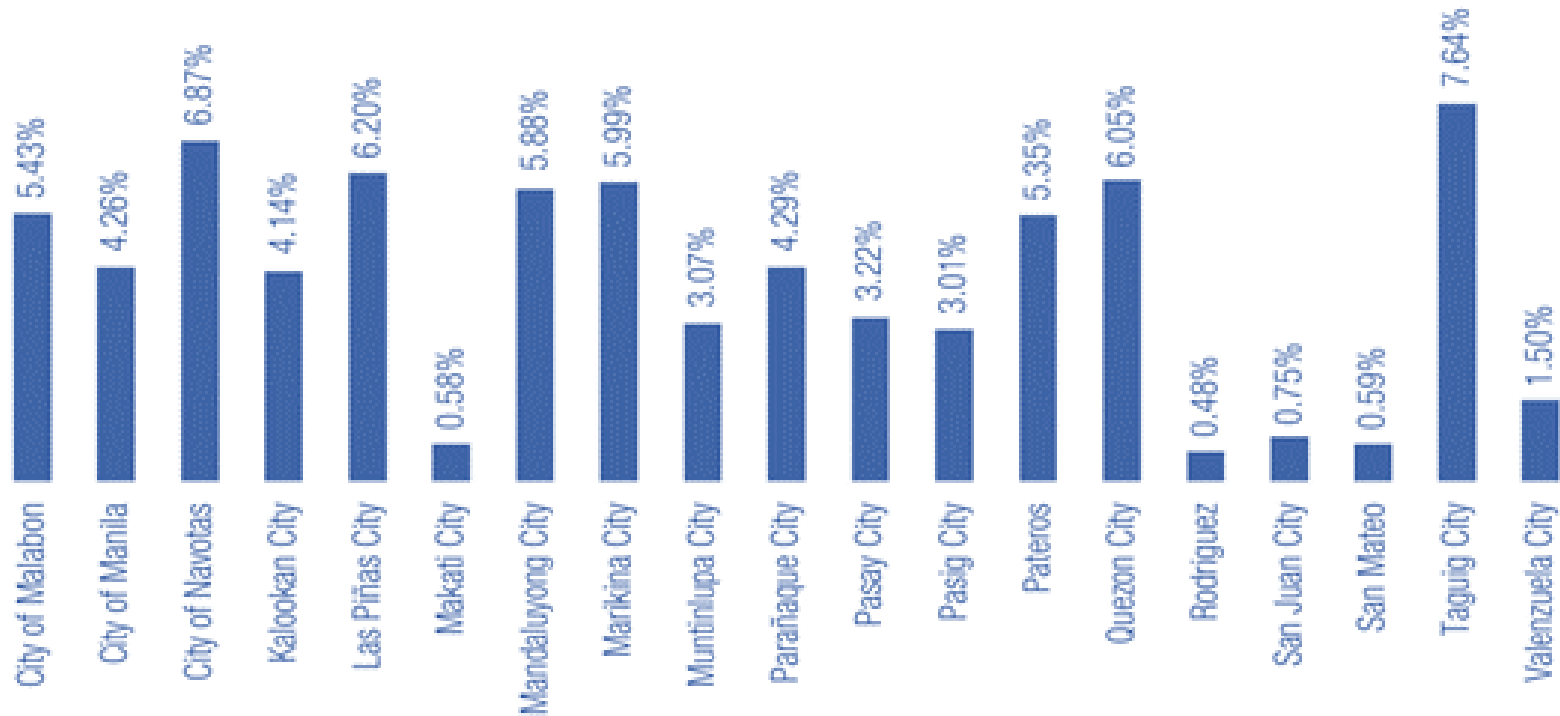
# Problem Analysis

## Present situation

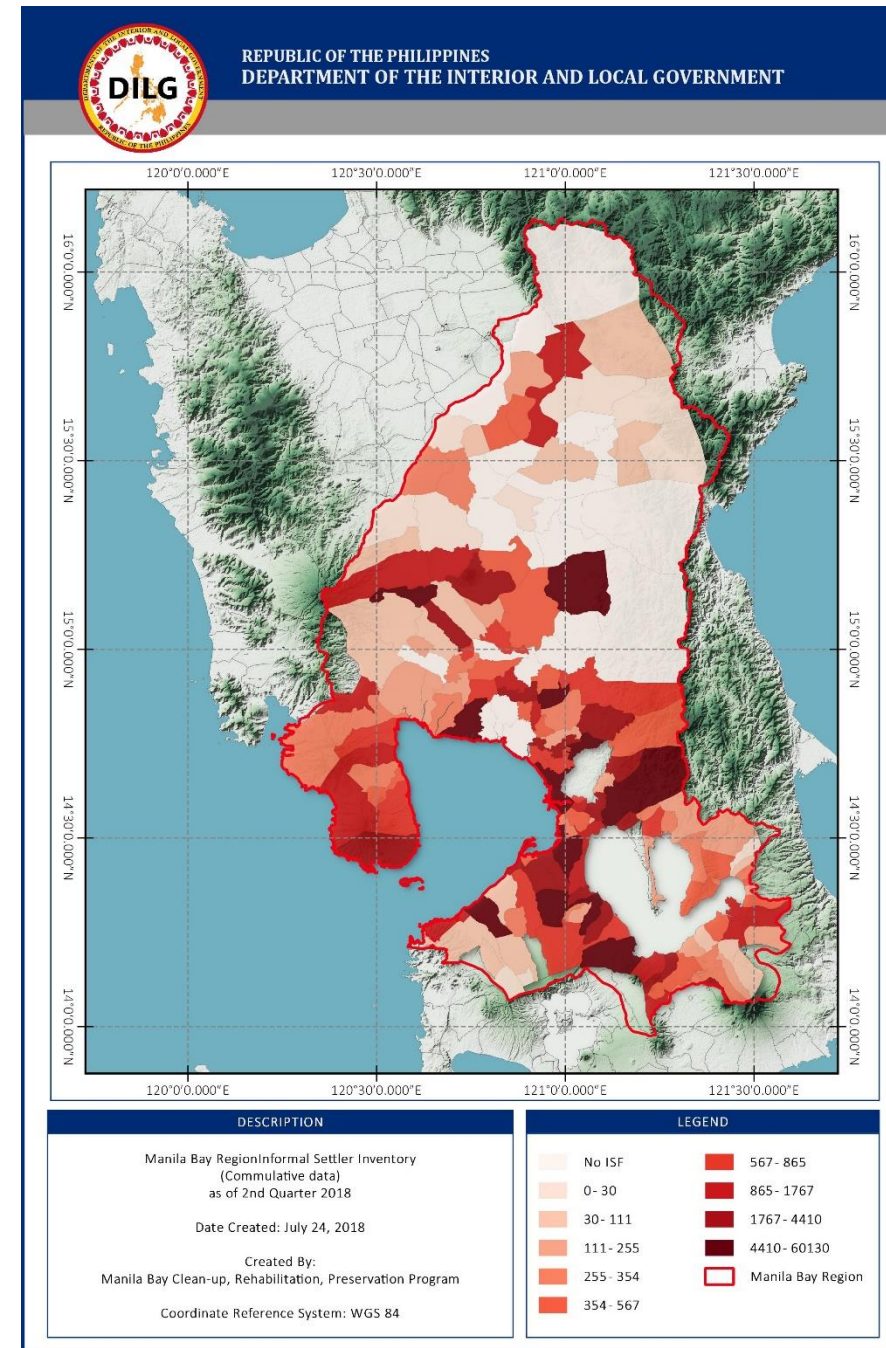
- ISFs in NCR in 2014: approx. 580,000
- ISFs in Region IV-A in 2014: approx. 140,000
- ISFs in Region III in 2014: approx. 82,000
- 51% are living in danger areas, 25% in privately owned lands, and 18% in government-owned lands

# Problem Analysis

## Areal proportions of ISFs in NCR



Sources: Singh and Gadgil, 2017. DILG, 2017



# Problem Analysis

Key issues and concerns – implementation of National Shelter Plan:

- Slow process in land acquisition, licensing, and agency/ LGU clearances, among others.
- Weak urban planning and unclear rules among government agencies, as well as national and local policies.
- Limited appropriations for housing which is one of the lowest among Southeast Asian countries.
- Institutional limitations among the KSAs.

- PDP 2017-2022

# Problem Analysis

## Key issues and concerns – informal settlements

Issue	Cited reasons
Weak enforcement and monitoring of local land use planning & standards for informal settlements.	Weak technical capability at the local level. Ineffective planning standards. Weak planning for informal settlements. Weak review of CLUPs/CDPs by the national planning agencies.
Inadequate, unharmonized, and unfocused socioeconomic development policies and programs.	Un-sustained efforts on local economic growth and job creation. Weak coordination among government agencies and private sector. Lack of targeted programs and social protection measures for ISFs.
- NISUS	Limited investments in education, health and human capital.

# Problem Analysis

## Key issues and concerns – informal settlements

Issue	Cited reasons
Limited access of informal settlers to and availability of affordable housing finance.	Low affordable limits of ISFs. Low income primary housing mortgages are not investable commodities. Limited lending facilities and financing programs for ISFs. Housing microfinance has not achieved scale.
Insufficient supply of affordable and adequate housing for informal settlers.	Unsuitable land use, building regulations, and the mismatch of high demand, low purchasing power. Inadequate supply of new housing units. Reduction in housing stock. Legal /Regulatory and other weaknesses. Lack of information/database.
Unclear delineation of accountabilities of institutions. - NISUS	Inefficient and fragmented institutional framework for informal settler housing. Unintegrated and ineffective policies for tackling informal settlements. Inadequate financial model. Limited staff weaknesses



## Objectives of DRR TP

- Address coastal flooding in LGUs along the coast of Manila Bay
- Reduce number of people affected by coastal flooding
- Reduce further increase in number of people affected by coastal flooding
- Enhance adaptive capacity of people exposed to coastal flooding

# Key Strategies and Projects

- Address Concerns of Informal Settlements affected by DRR Measure:  
***COMPONENTS***

- **Ensure that relocated ISFs due to DRR-CCA are provided with affordable, safe and appropriate settlements (Technical Assistance)**
  - Implement Socialized Housing programs
  - Require proximity and availability of livelihood provision and basic services in resettlement sites
  - Encourage innovative housing solutions and alternative designs
- **Stronger promotion for people not to reside in legal easements (Technical Assistance)**
  - Adopt NISU Strategy 13 "Capability-building for appropriate data collection, mapping, knowledge management, and monitoring systems of informal settlements (IS)"
  - Capability-building of LGUs, people's organizations, community-based organizations, and homeowners' associations to engage more on ISF housing (IS)" (adaptation of NISU Strategy 14)
  - Policy reform and improvement of enforcement of related laws and regulations on land development, and construction of buildings and infrastructure
  - Monitor the cleared easements

## Key Strategies and Projects

- Address Concerns of Informal Settlements affected by DRR

Measure: ***IMPLEMENTING AGENCIES***

- LGUs
- DHSUD
- Shelter Agencies
- Manila Bay Task Force
- NGOs and POs

## Key Strategies and Projects

- Address Concerns of Informal Settlements affected by DRR

### Measure: ***POLICY REQUIREMENTS***

- Risk-sensitive Shelter Planning, Land Use Planning and Zoning
- Policy reform and improvement/ enforcement of related laws and regulations on land development, and construction of buildings and infrastructure

## Key Strategies and Projects

- Address Concerns of Informal Settlements affected by DRR

### Measure: ***IEC REQUIREMENTS***

- Capability-building for appropriate data collection, mapping, knowledge management, and monitoring systems of informal settlements (IS) (adaptation of NISU Strategy 13)
- Capability-building and Training of LGUs, people's organizations, community-based organizations, and homeowners' associations to engage more on ISF housing (IS)" (adaptation of NISU Strategy 14)
- CEPA (Communication Education and Public Awareness) on the many risks in highly susceptible areas

## Key Strategies and Projects

- Address Concerns of Informal Settlements affected by DRR  
Measure: ***BUDGET REQUIREMENTS***
  - Budget to fund
    - Technical Assistance for the key components



End of Presentation