



REPUBLIC OF THE PHILIPPINES

NATIONAL ECONOMIC AND DEVELOPMENT AUTHORITY



**Manila Bay Sustainable Development Master Plan**

# 7<sup>th</sup> TC Meeting

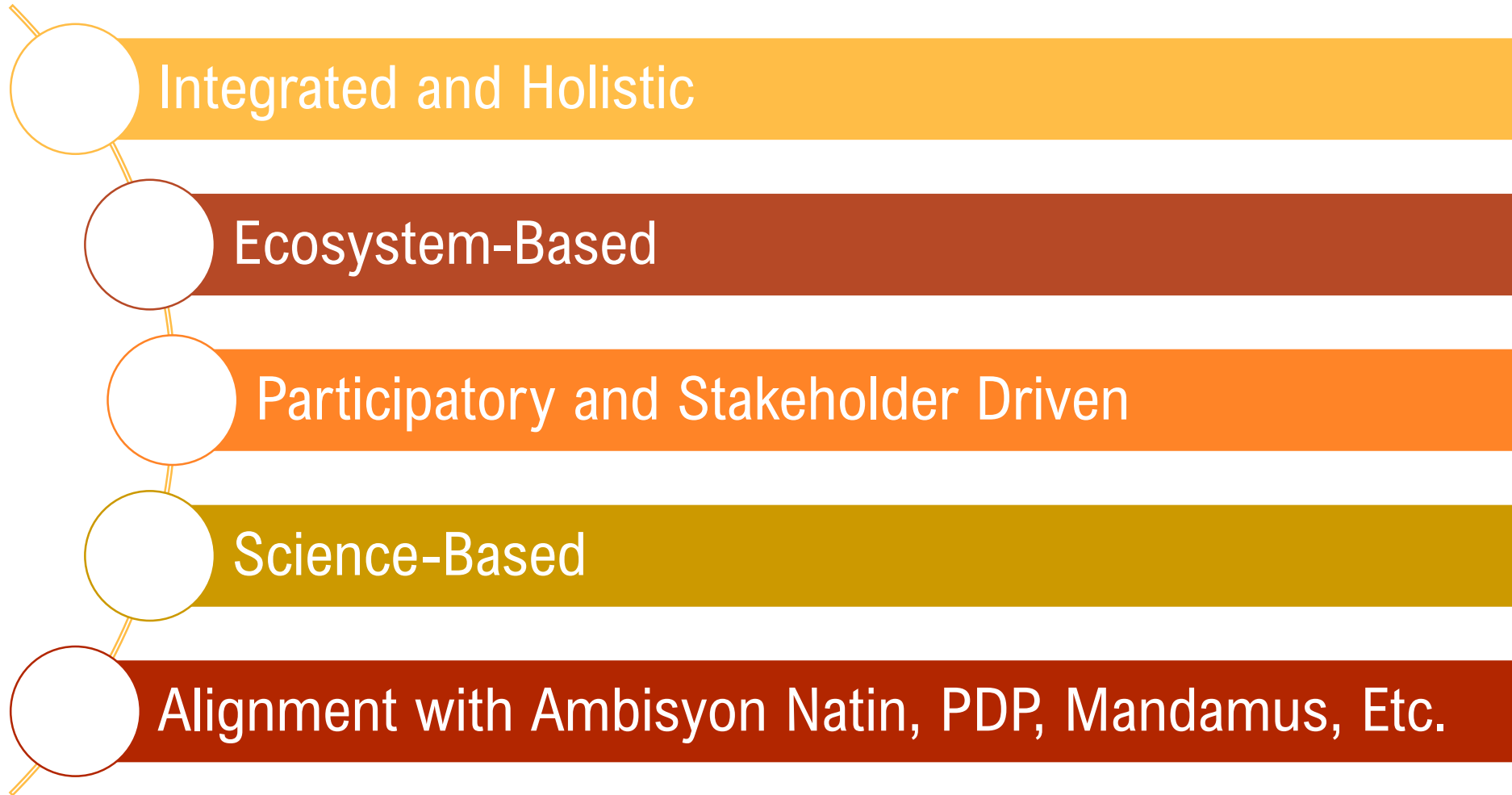
16 January 2020, Quezon City

- The Project is to formulate a comprehensive and sustainable master plan for Manila Bay and the immediate coastal zone.
- Strategic management and development goals include inclusive growth, ecosystem protection, climate change adaptation and disaster risk reduction, water quality improvement, and upgrading informal settlements.
- Set in place appropriate mechanisms for sustainable engagement of private sector.
- Time frame is 20 years with 2022, 2030 and 2040 as key timelines .
- Manila Bay Area, Manila Bay Coastal and Watershed Area Boundary (Manila Bay Coastal Strategy 2001)
- Project Duration: 30 months (January 2018 – July 2020)

Study Team consist of:

- **Dutch Expert Team (DET)** – funded by Government of Philippines and the Government of the Kingdom of the Netherlands
  - **Deltares**, specialists from **various Dutch government agencies and funded programs** (i.e., Partners for Resilience)
- **Local Consulting Firm** – funded from NEDA's Infrastructure Development Preparation (IDP) Fund
  - **OIDCI** (Lead Firm),
  - **TRACT**, and
  - **UPLBFI**.

# Master Plan Guiding Principles



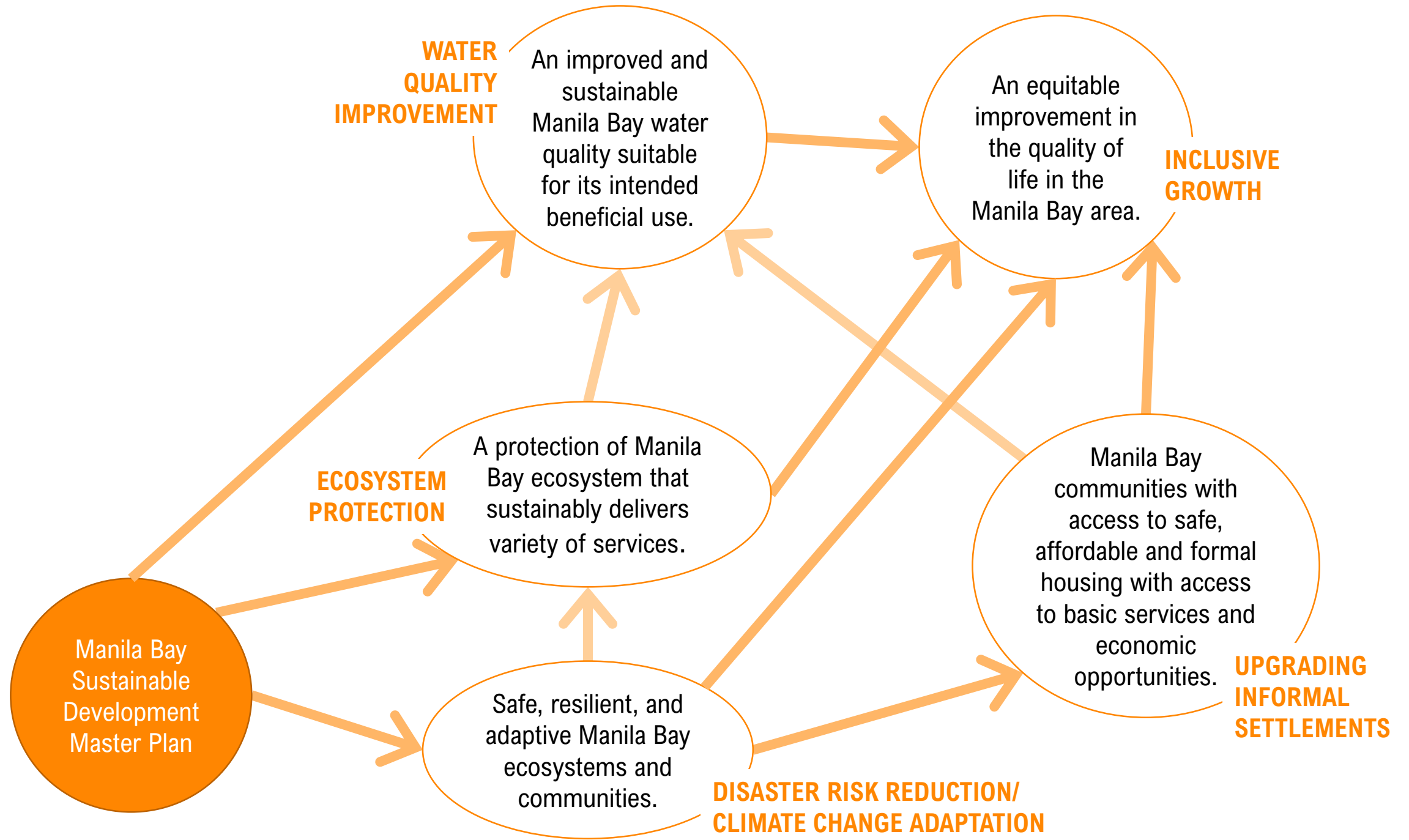
# MBSDMP Status

wherearenow



- Includes abridged version of the results/findings of previous deliverables under Component 1: Strategic Plan/Master Plan (Situation Analysis Report, Strategy Building Report, Institutional Set-Up Report, and Capacity Building Plan)
- Integration of the ICZM Planning Framework
- Includes preliminary investment requirements for each Programs, Activities, and Projects (PAPs) – to be fine-tuned during the Action Plan/ Investment Report
- Update PAPs initial information (Institutional set-up, narrative description, M&E, policy requirements) to align to existing government thrusts, and initiatives, including MB Task Force KRAs.
- Update Institutional Set-Up and Capacity Building Plan – aligned with their mandates which will support the implementation of the Final Master Plan report
- Update data on strategy building/prioritization process – validation, iteration
- Update enabling environment of the Master Plan
- Compliance to Strategic Environmental Assessment (SEA) from Situational Analysis to Operational Planning Phase
- Additional narrative descriptions to further elaborate certain subjects/topics (i.e., strategy building, computational framework/model, poverty reduction, financial investments, unsolicited to solicited proposals, decongesting Metro Manila).

whatdowewant?



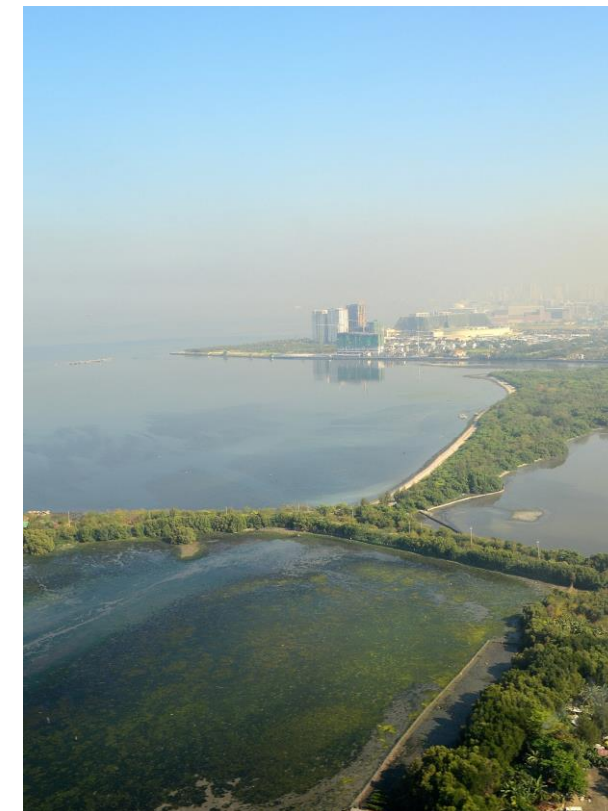
# A Sustainable and Resilient Manila Bay

*through*

- improving water quality of Manila Bay,
- protecting the Manila Bay ecosystem, and
- making the Manila Bay ecosystem and communities safe, resilient and adaptive

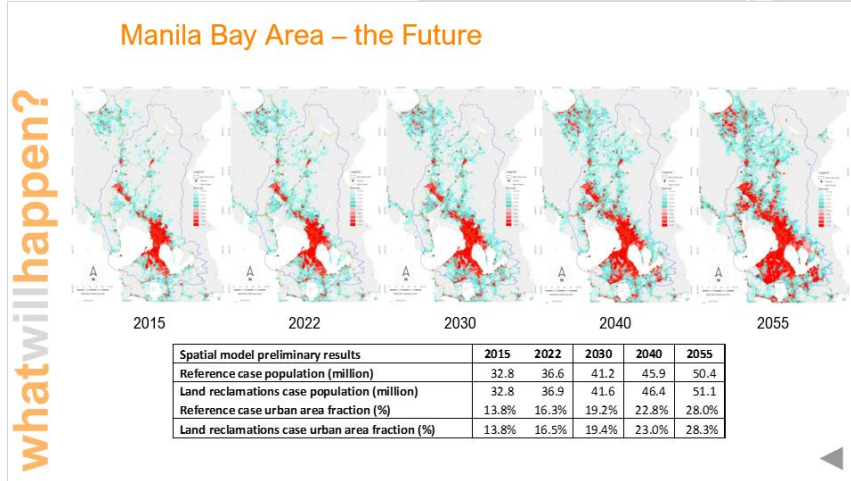
*while*

- promoting inclusive growth, and
- ensuring informal settlements in cleared hazard-prone areas are with access to safe, affordable, formal housing and to basic services and economic opportunities.





# Manila Bay Area (snapshot)



Solid waste not properly managed (i.e., open dump sites, low diversion rate)

Millions of people exposed to flooding

Area of Natural Habitat Decreasing

Settlements in hazard areas

Manila Bay not meeting SB Guidelines

Within the Philippines most urban area, about 1.47 millions still live in poverty.

Pollution (i.e., BOD, PO4) Load Unmanaged

Fish stock biomass decreasing

# Measures

Priority Measures	Improve Management of Critical Habitats
	Improve Solid Waste Management
	Reduce Pollution Load
	Implement Disaster Risk Reduction and Management Programs/Project
	Address Concerns of Informal Settlements in Easements and High-risk Areas
	Implement Sustainable Fisheries Management
Enabling Environment Measures	Promoting Environmentally Friendly Development
	Decongesting Metro Manila
	Institutional Set-up and Capacity Building
	Integrated Coastal Zone Management (ICZM) Planning Framework
	Enforcement of Existing Rules and Regulations
	PAPs Financing and Funding Mechanisms

# Institutional Set-Up

		Short-Term Up to 2022	Medium to Long Term 2023 to 2040
		<b>MB Task Force</b>	<b>MBDA (?)</b>
Priority Measures	Improve Management of Critical Habitats	KRA 4	
	Improve Solid Waste Management	KRA 2	
	Reduce Pollution Load	KRA 1	
	Implement Disaster Risk Reduction and Management Programs/Project		
	Address Concerns of Informal Settlements in Easements and High-risk Areas	KRA 3	
	Implement Sustainable Fisheries Management	KRA 4	
Enabling Environment Measures	Promoting Environmentally Friendly Development		
	Decongesting Metro Manila		
	Institutional Set-up and Capacity Building , M&E, MBSDMP (update)	KRA 7	
	Integrated Coastal Zone Management (ICZM) Planning Framework		
	Enforcement of Existing Rules and Regulations		
	PAPs Financing and Funding Mechanisms		

# Measures → Action Plan → PAPs → Investment Program

Priority Measures	Improve Management of Critical Habitats
	Improve Solid Waste Management
	Reduce Pollution Load
	Implement Disaster Risk Reduction and Management Programs/Project
	Address Concerns of Informal Settlements in Easements and High-risk Areas
	Implement Sustainable Fisheries Management
Enabling Environment Measures	Promoting Environmentally Friendly Development
	Decongesting Metro Manila
	Institutional Set-up and Capacity Building
	Integrated Coastal Zone Management (ICZM) Planning Framework
	Enforcement of Existing Rules and Regulations
	PAPs Financing and Funding Mechanisms

Short-Term  
Up to 2022

Medium to Long Term  
2023 to 2040

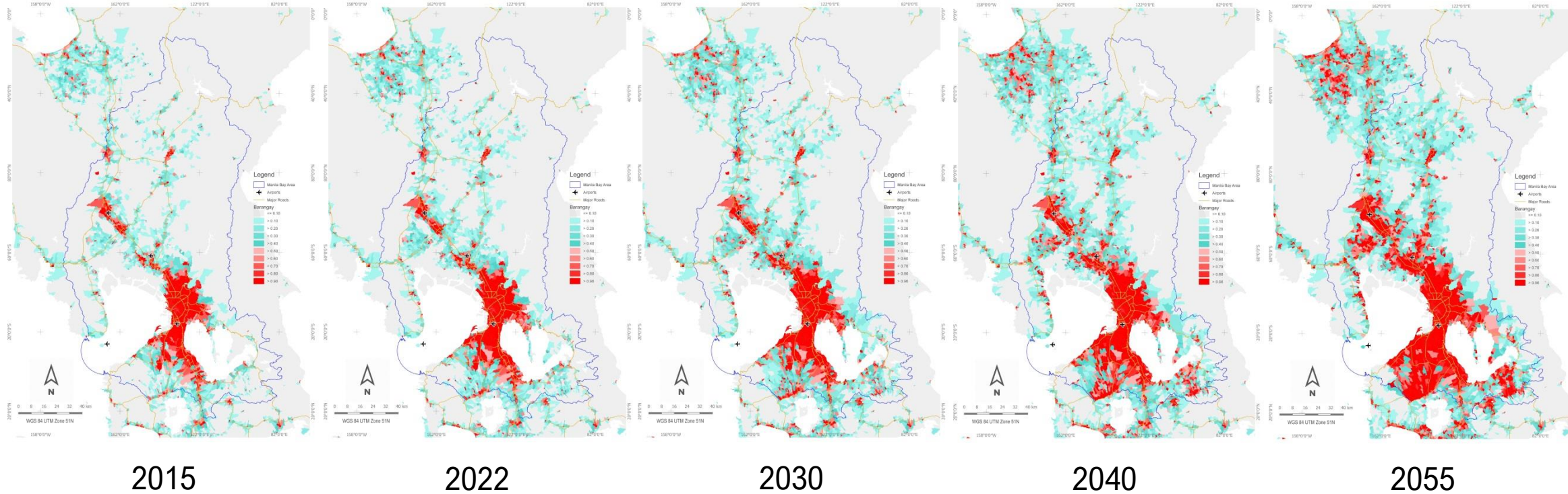
**Action Plan/ Investment Program**  
March 2020

# End of Slide

Reports are available at [www.mbsdmp.com](http://www.mbsdmp.com)

# Manila Bay Area – the Future

what will happen?



Spatial model preliminary results	2015	2022	2030	2040	2055
Reference case population (million)	32.8	36.6	41.2	45.9	50.4
Land reclamations case population (million)	32.8	36.9	41.6	46.4	51.1
Reference case urban area fraction (%)	13.8%	16.3%	19.2%	22.8%	28.0%
Land reclamations case urban area fraction (%)	13.8%	16.5%	19.4%	23.0%	28.3%

